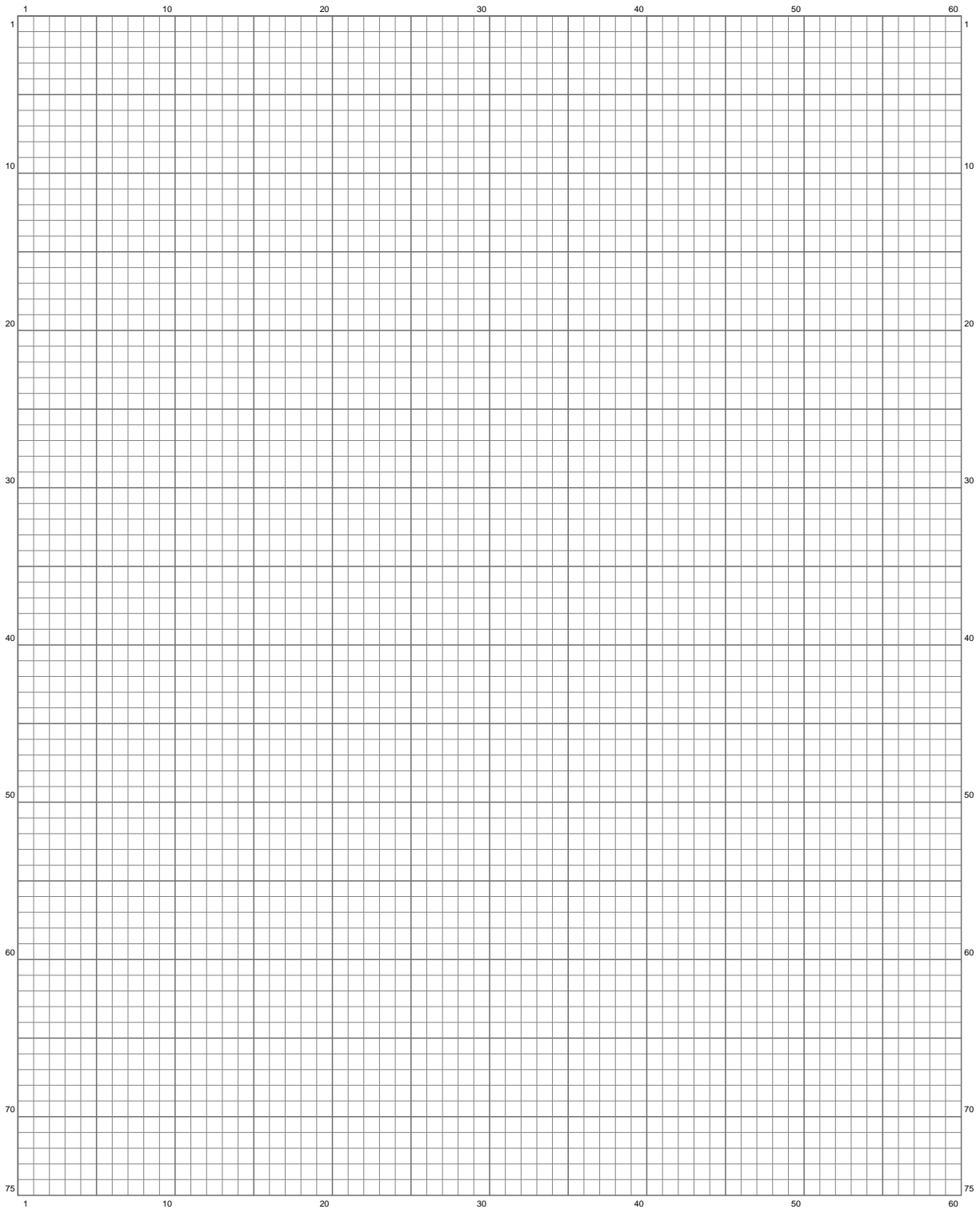


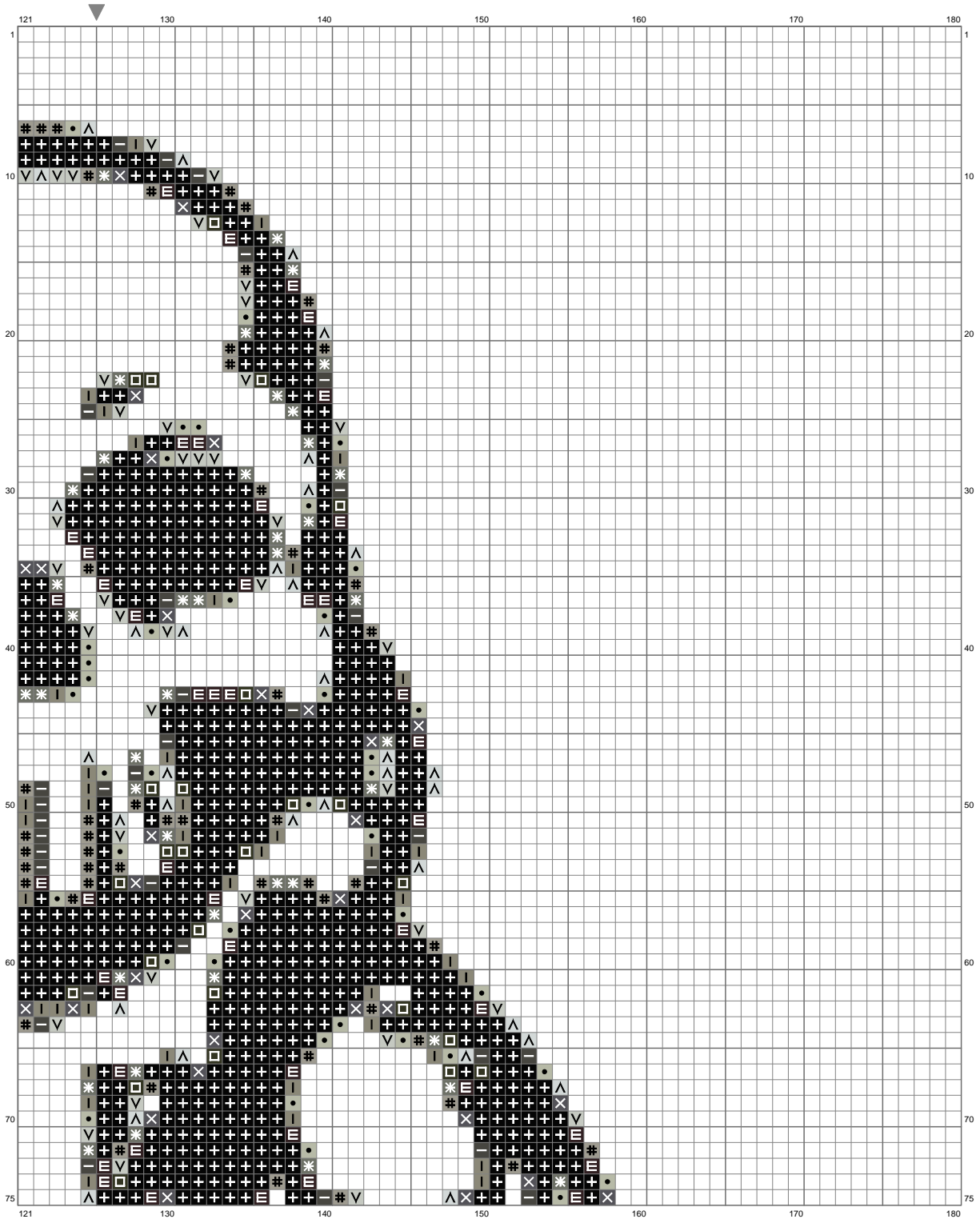
# Untitled



(This chart is printed using KG-Chart LE for Cross Stitch.)

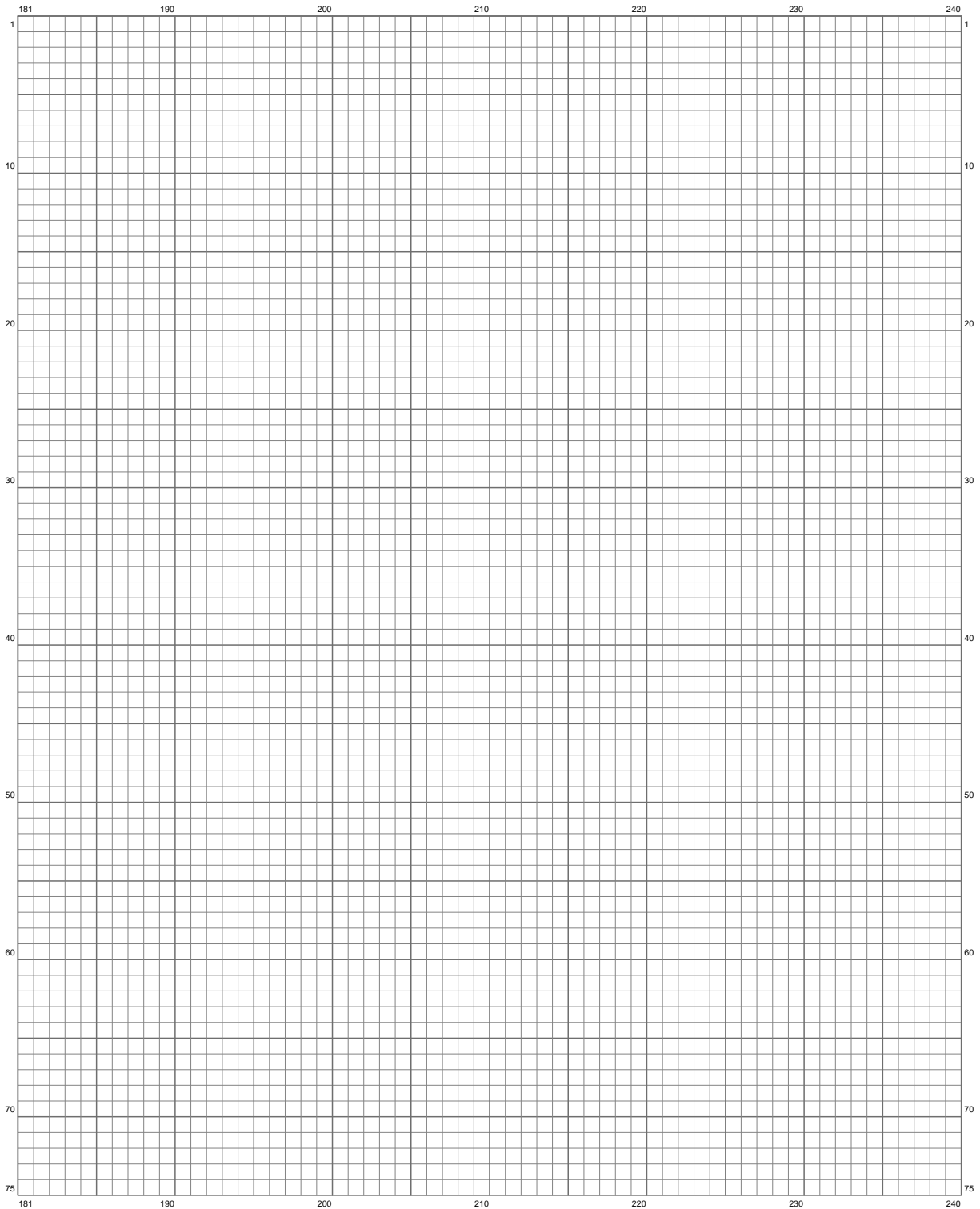


# Untitled



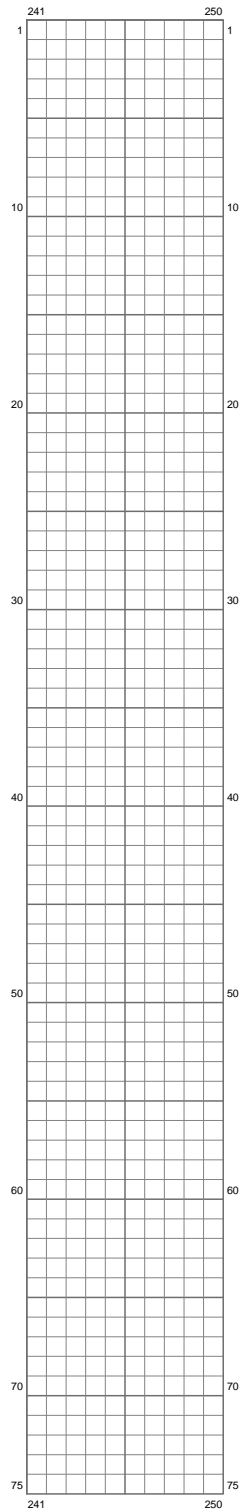
(This chart is printed using KG-Chart LE for Cross Stitch.)

# Untitled



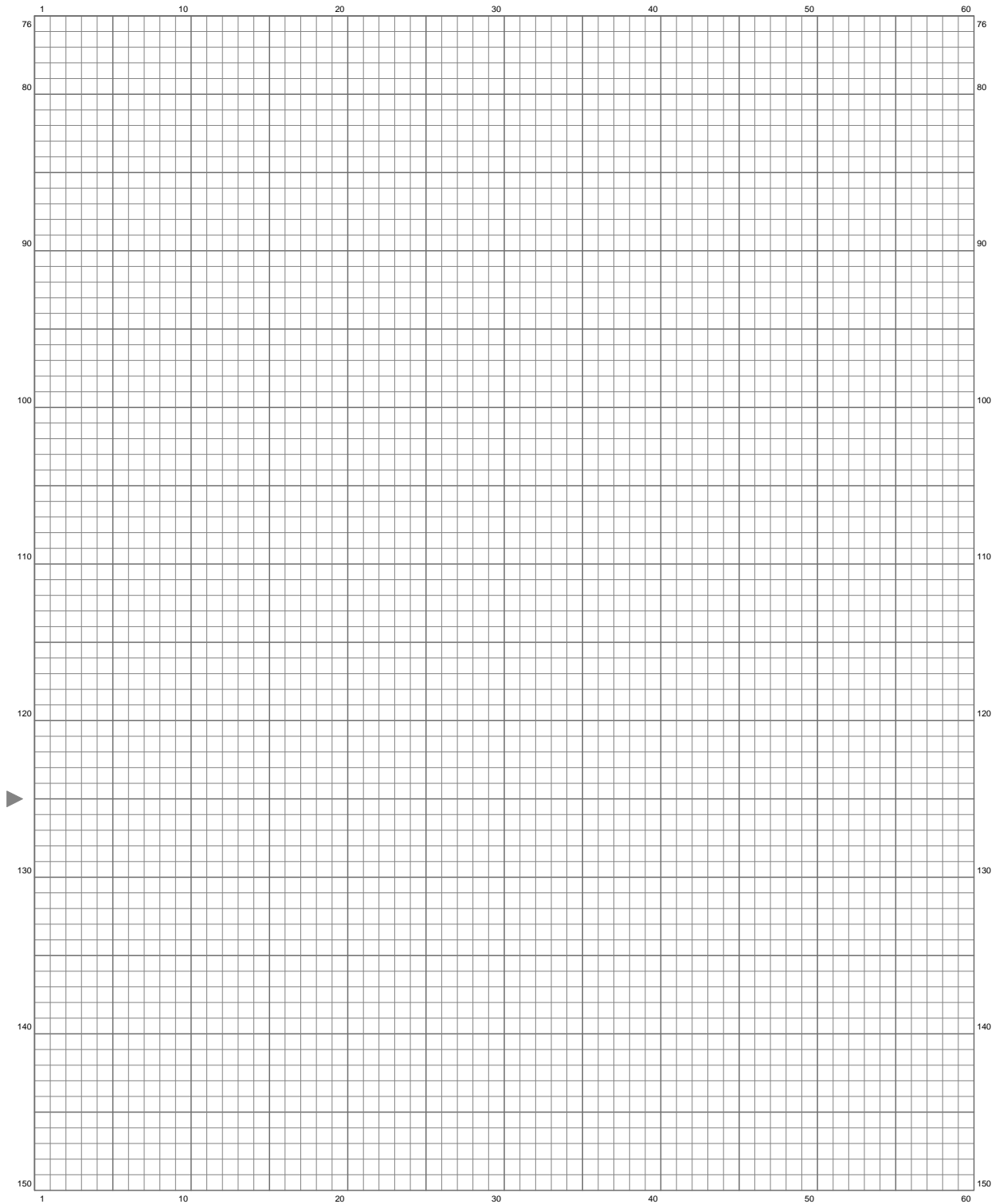
(This chart is printed using KG-Chart LE for Cross Stitch.)

# Untitled



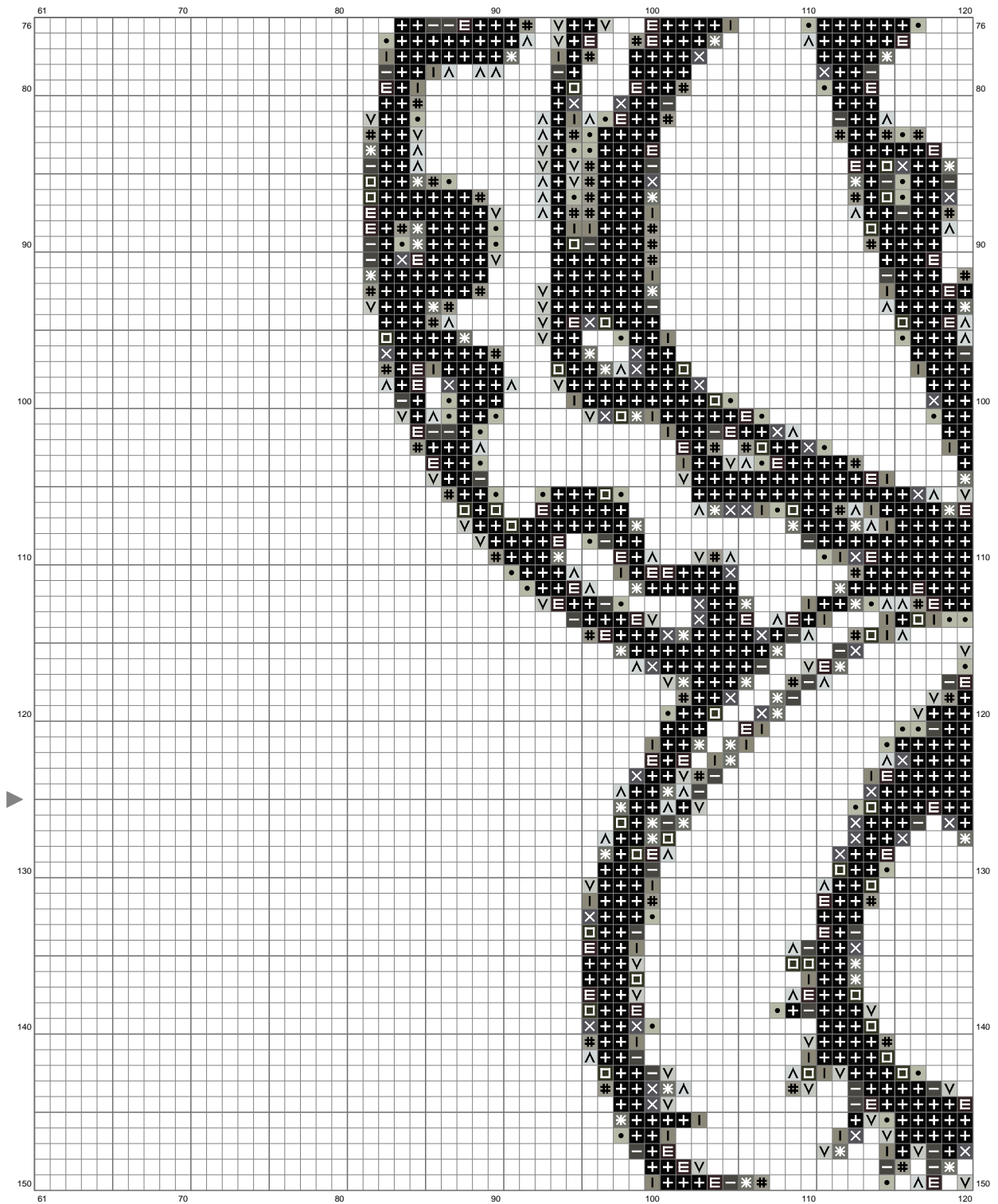
(This chart is printed using KG-Chart LE for Cross Stitch.)

# Untitled



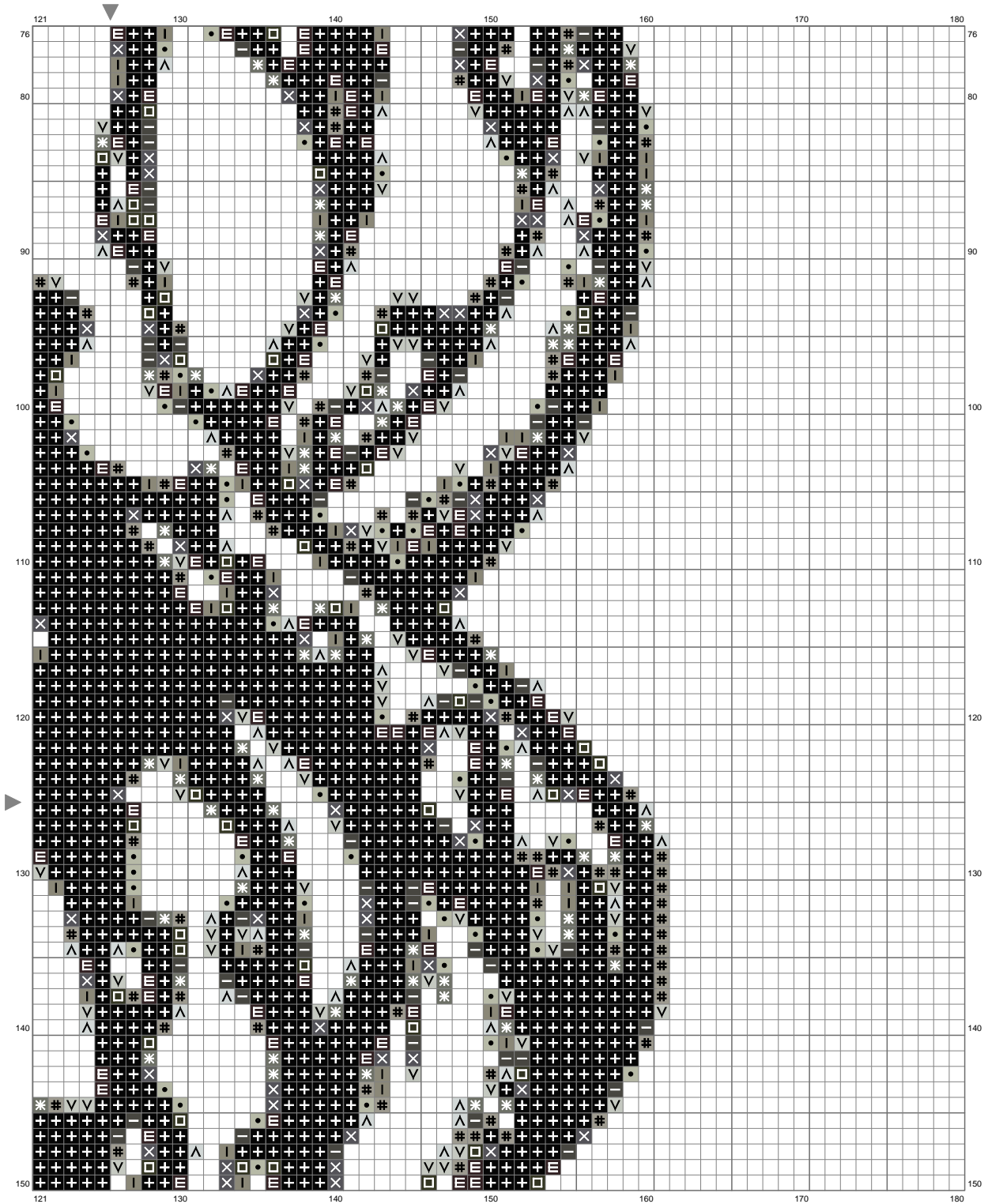
(This chart is printed using KG-Chart LE for Cross Stitch.)

# Untitled



(This chart is printed using KG-Chart LE for Cross Stitch.)

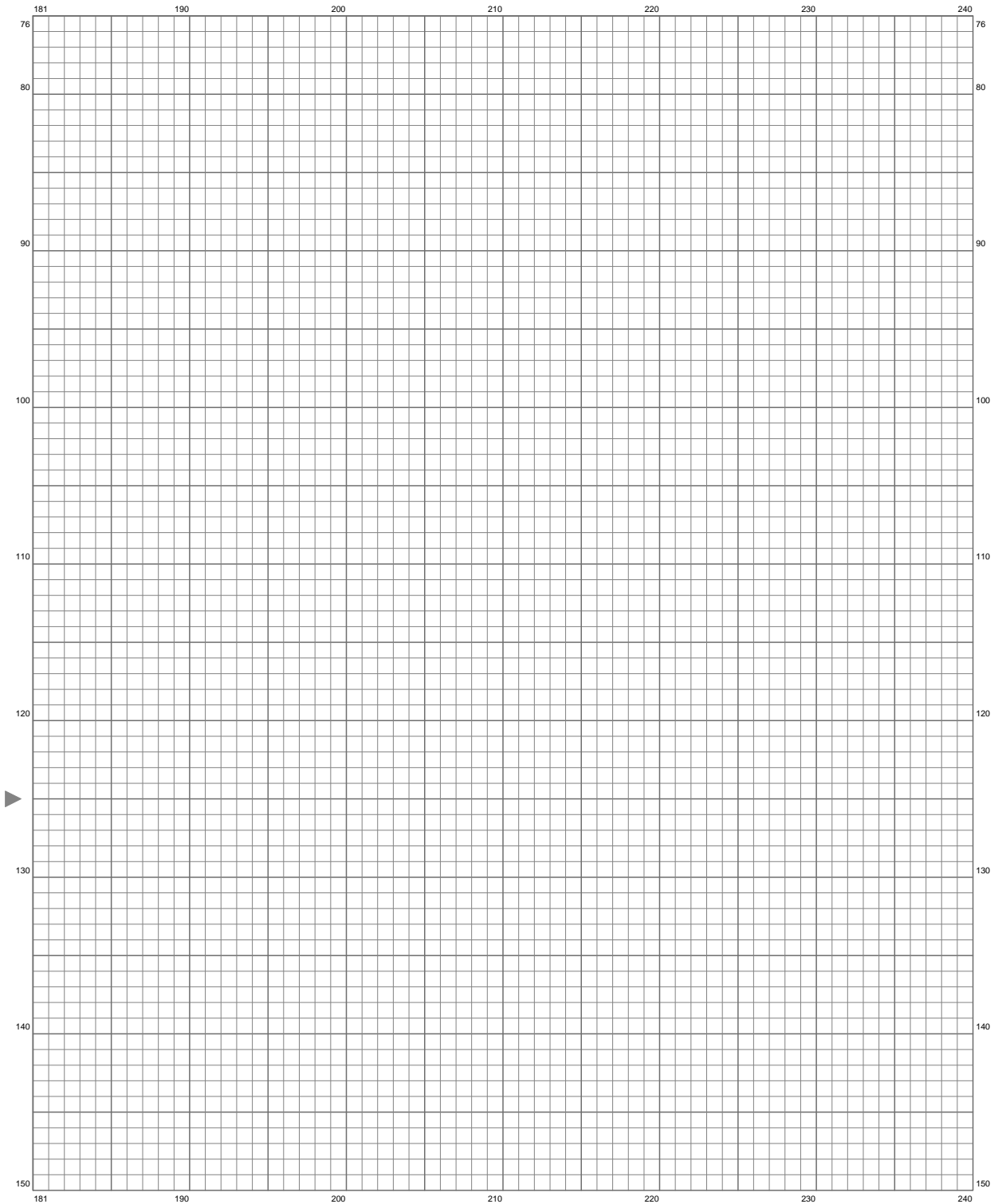
# Untitled



(This chart is printed using KG-Chart LE for Cross Stitch.)

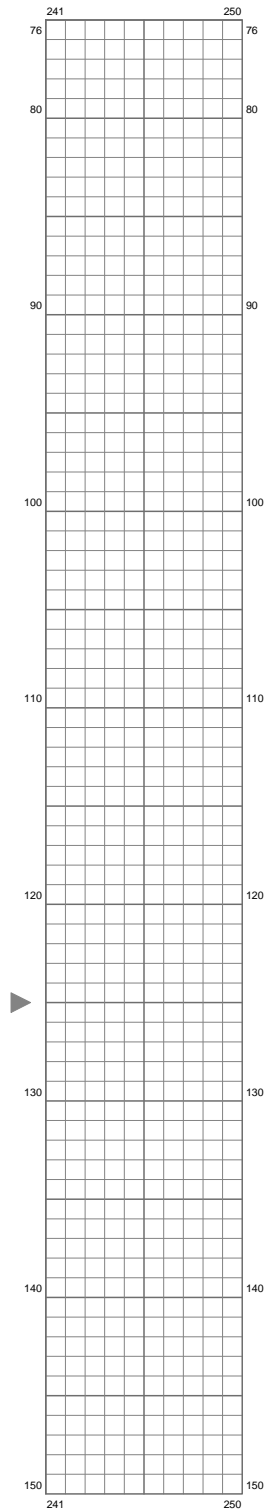


# Untitled



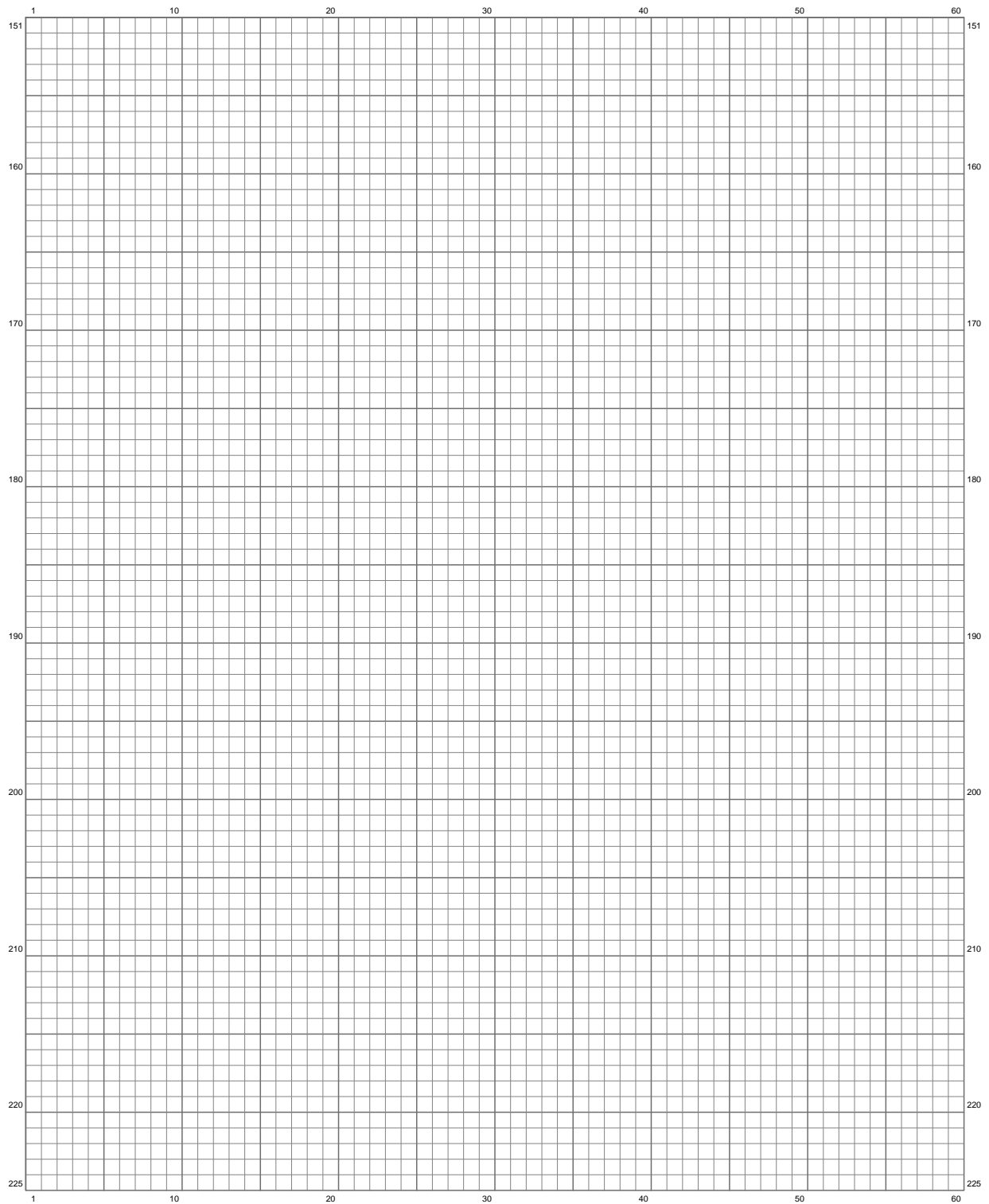
(This chart is printed using KG-Chart LE for Cross Stitch.)

# Untitled



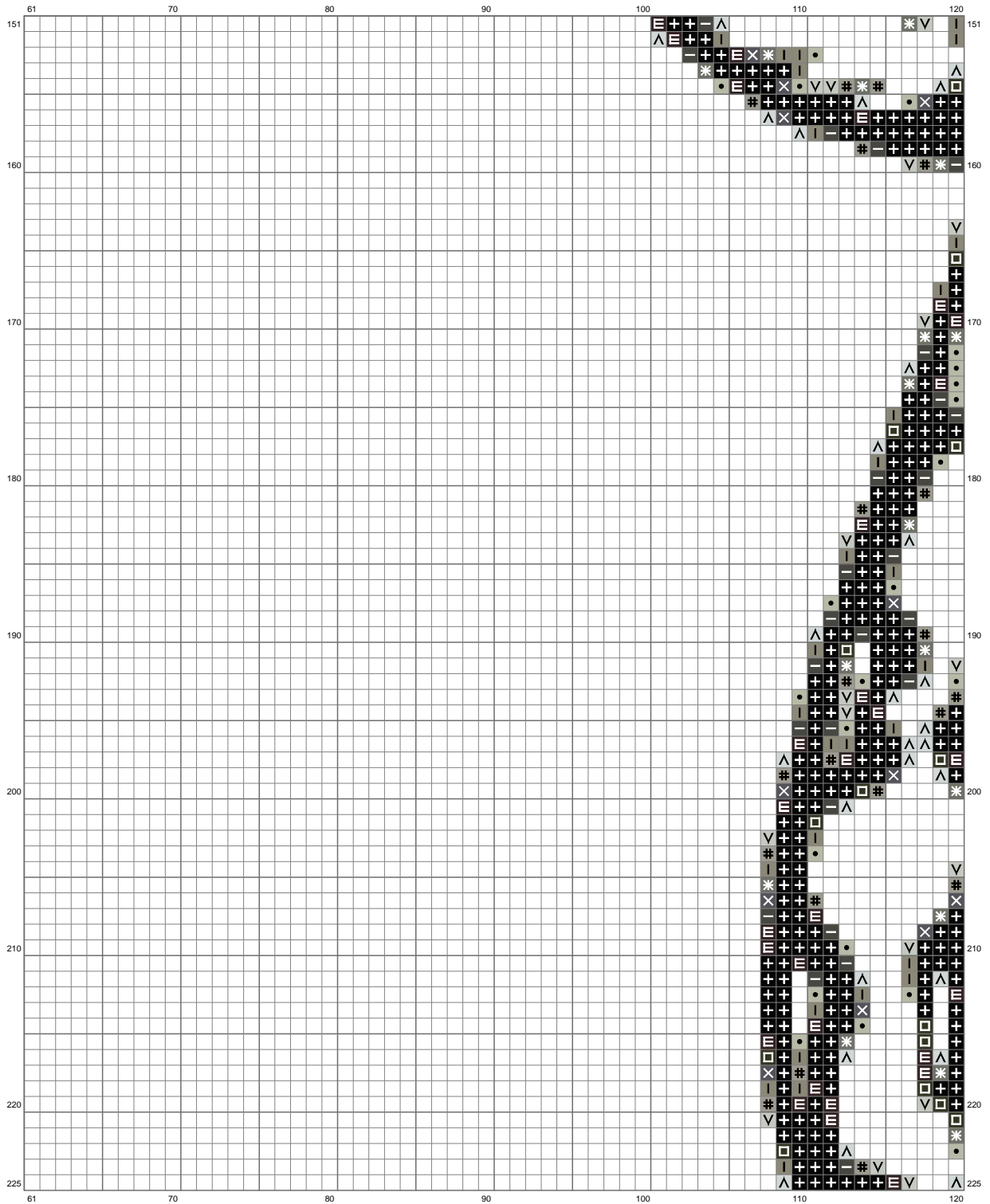
(This chart is printed using KG-Chart LE for Cross Stitch.)

# Untitled



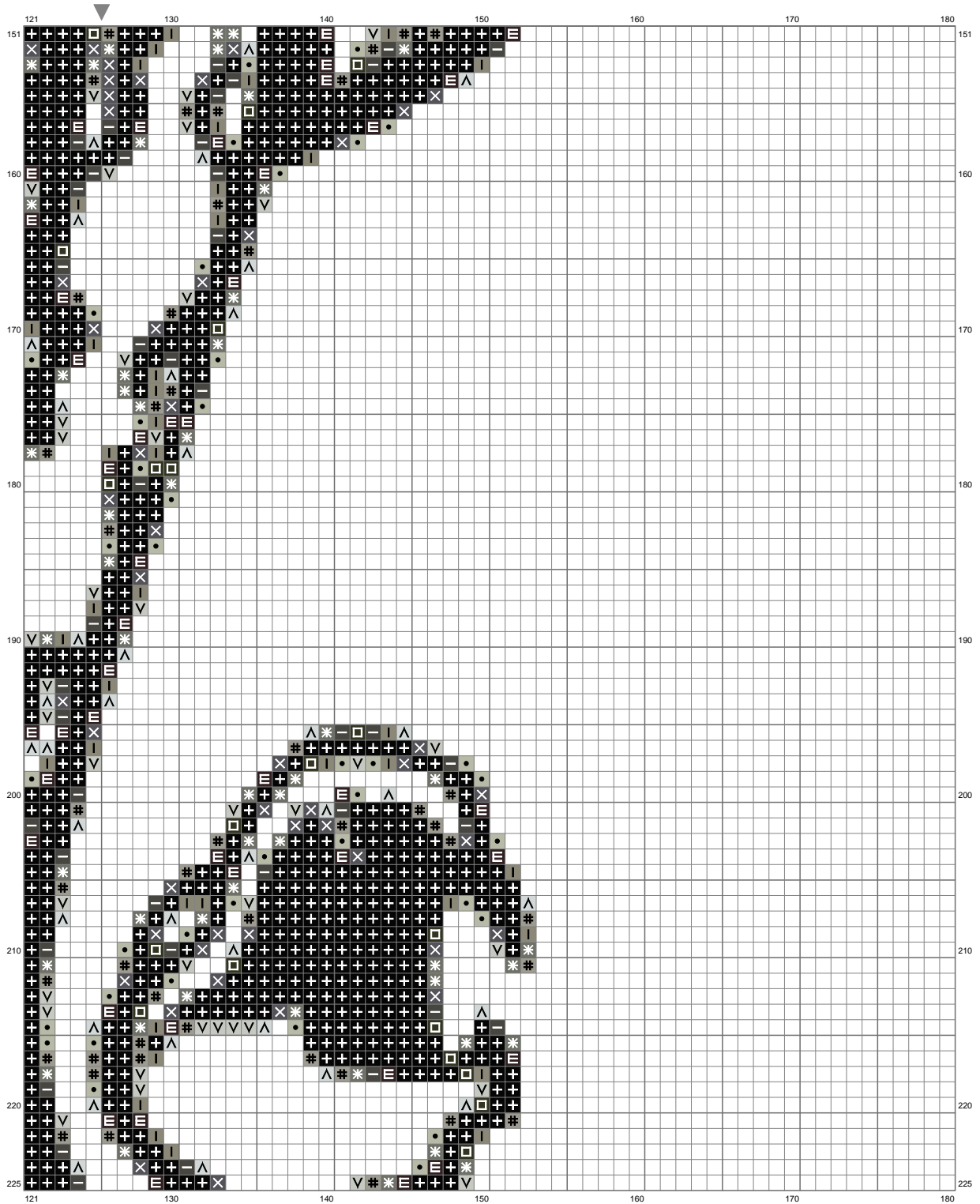
(This chart is printed using KG-Chart LE for Cross Stitch.)

# Untitled



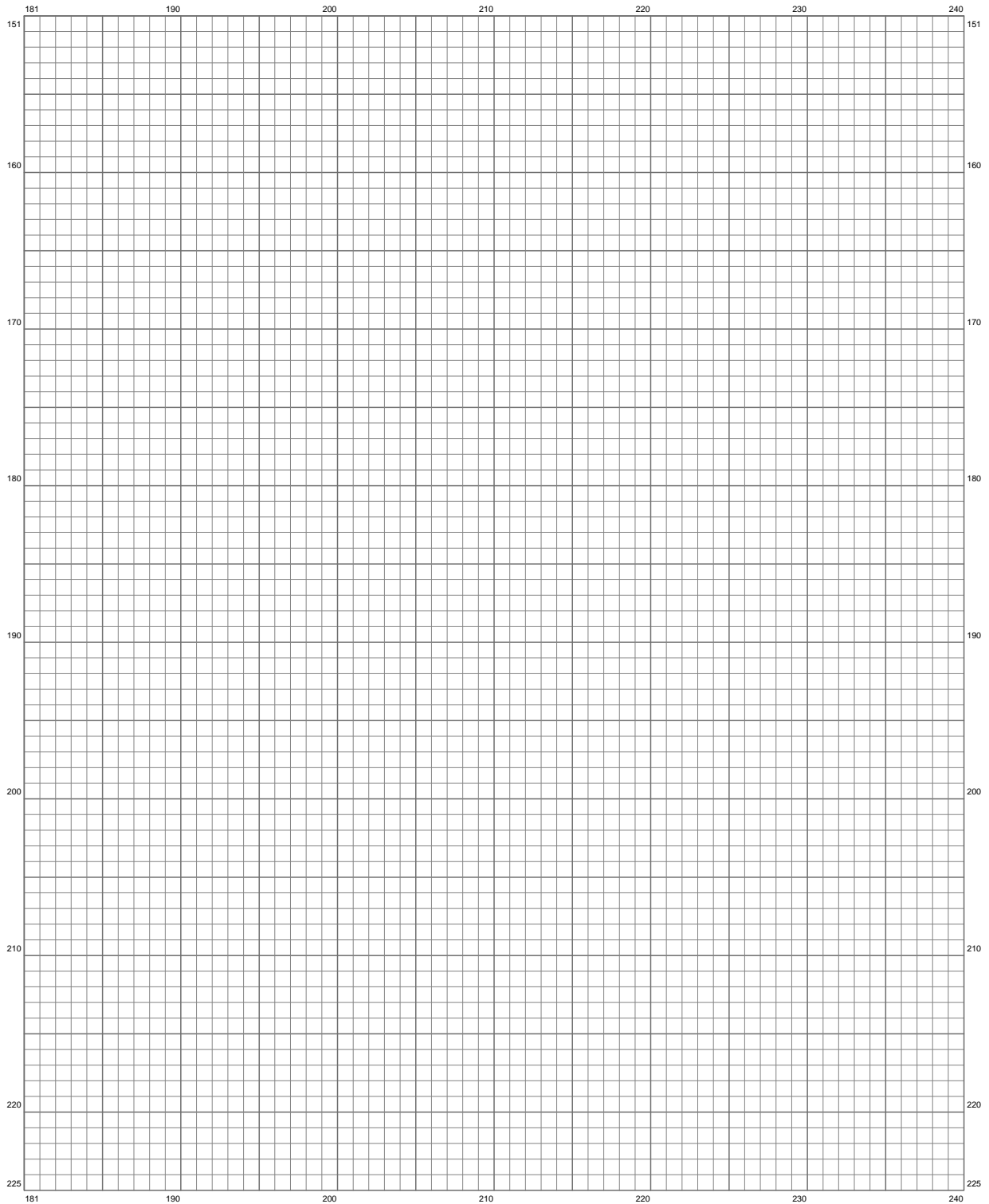
(This chart is printed using KG-Chart LE for Cross Stitch.)

# Untitled



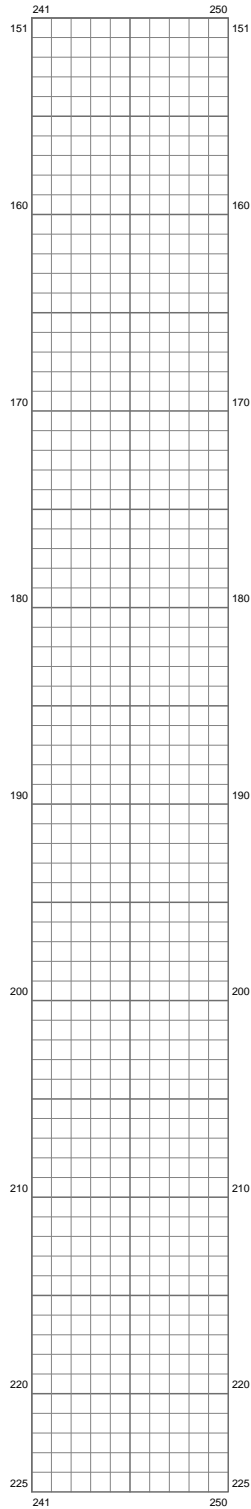
(This chart is printed using KG-Chart LE for Cross Stitch.)

# Untitled



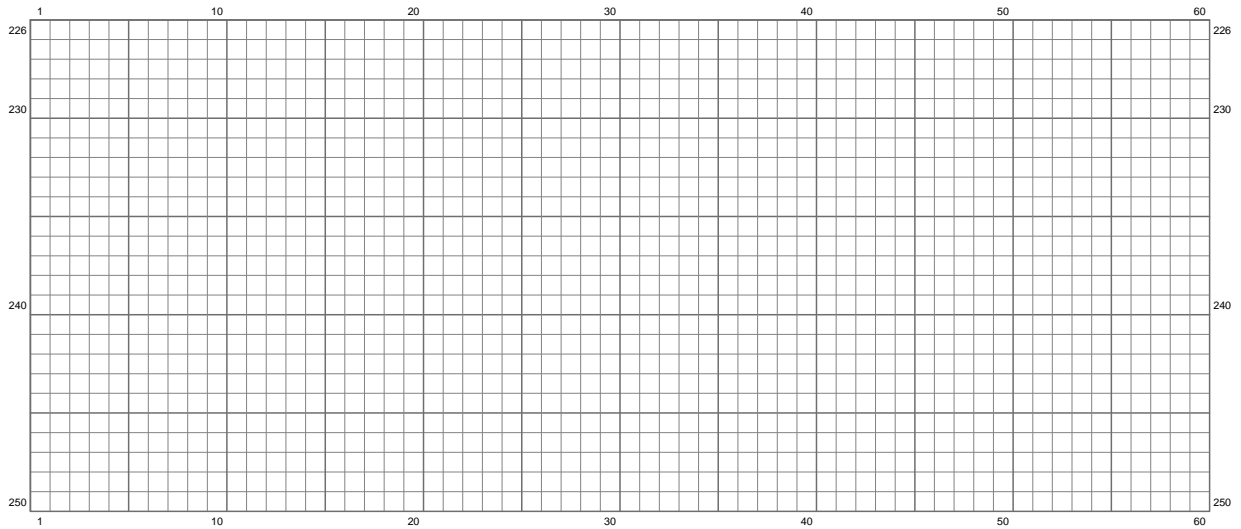
(This chart is printed using KG-Chart LE for Cross Stitch.)

# Untitled



(This chart is printed using KG-Chart LE for Cross Stitch.)

# Untitled

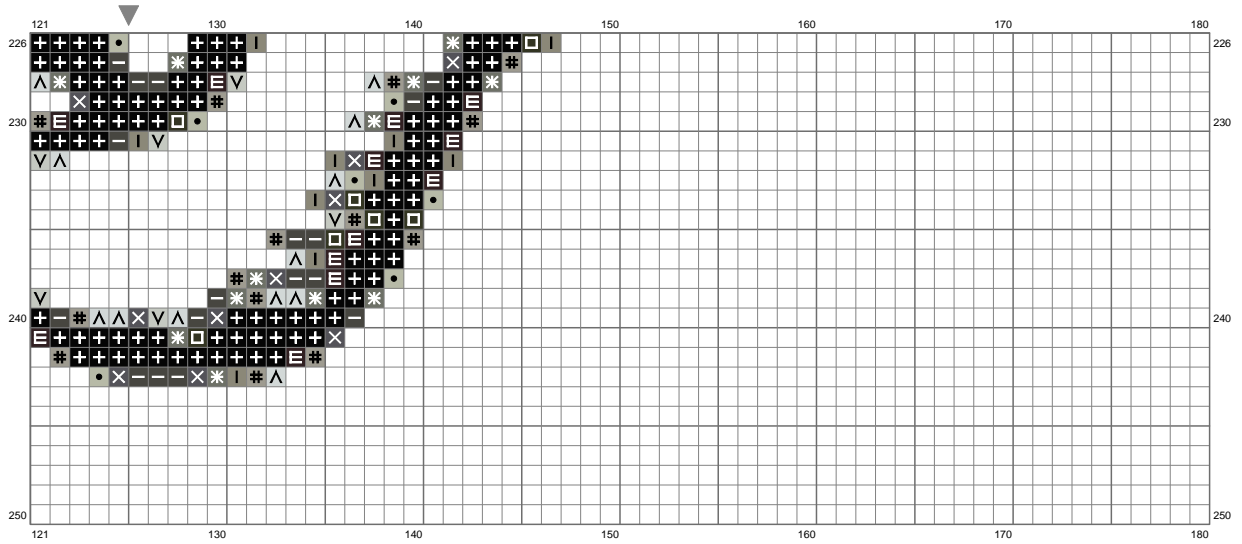


(This chart is printed using KG-Chart LE for Cross Stitch.)



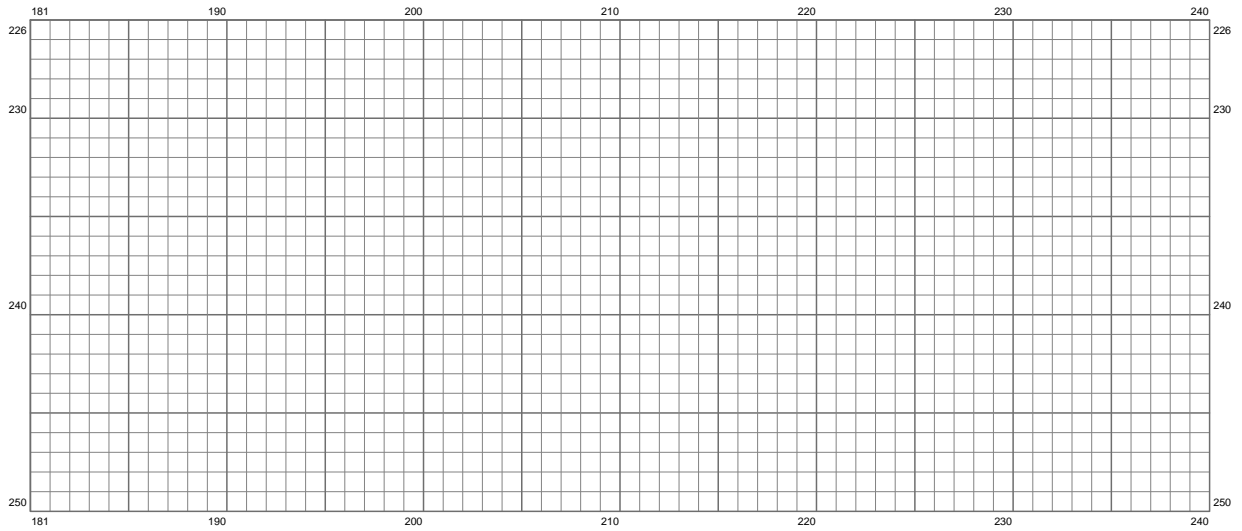


# Untitled



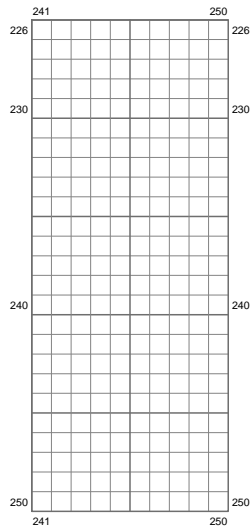
(This chart is printed using KG-Chart LE for Cross Stitch.)

# Untitled



(This chart is printed using KG-Chart LE for Cross Stitch.)

# Untitled



(This chart is printed using KG-Chart LE for Cross Stitch.)

Stitch Count: 250w x 250h

Finished Size: 45.35 cm x 45.35 cm (28 ct./inch)

Cloth: Aida

Cloth's Color: White

# of colors: 11 Colors

## Color Table (DMC)

### Cross Stitch

+	310	(4209 ct)
≡	939	(368 ct)
□	934	(181 ct)
—	3021	(283 ct)
×	3799	(264 ct)
✳	645	(290 ct)
┆	640	(262 ct)
#	646	(318 ct)
●	523	(263 ct)
∨	3023	(258 ct)
∧	928	(265 ct)