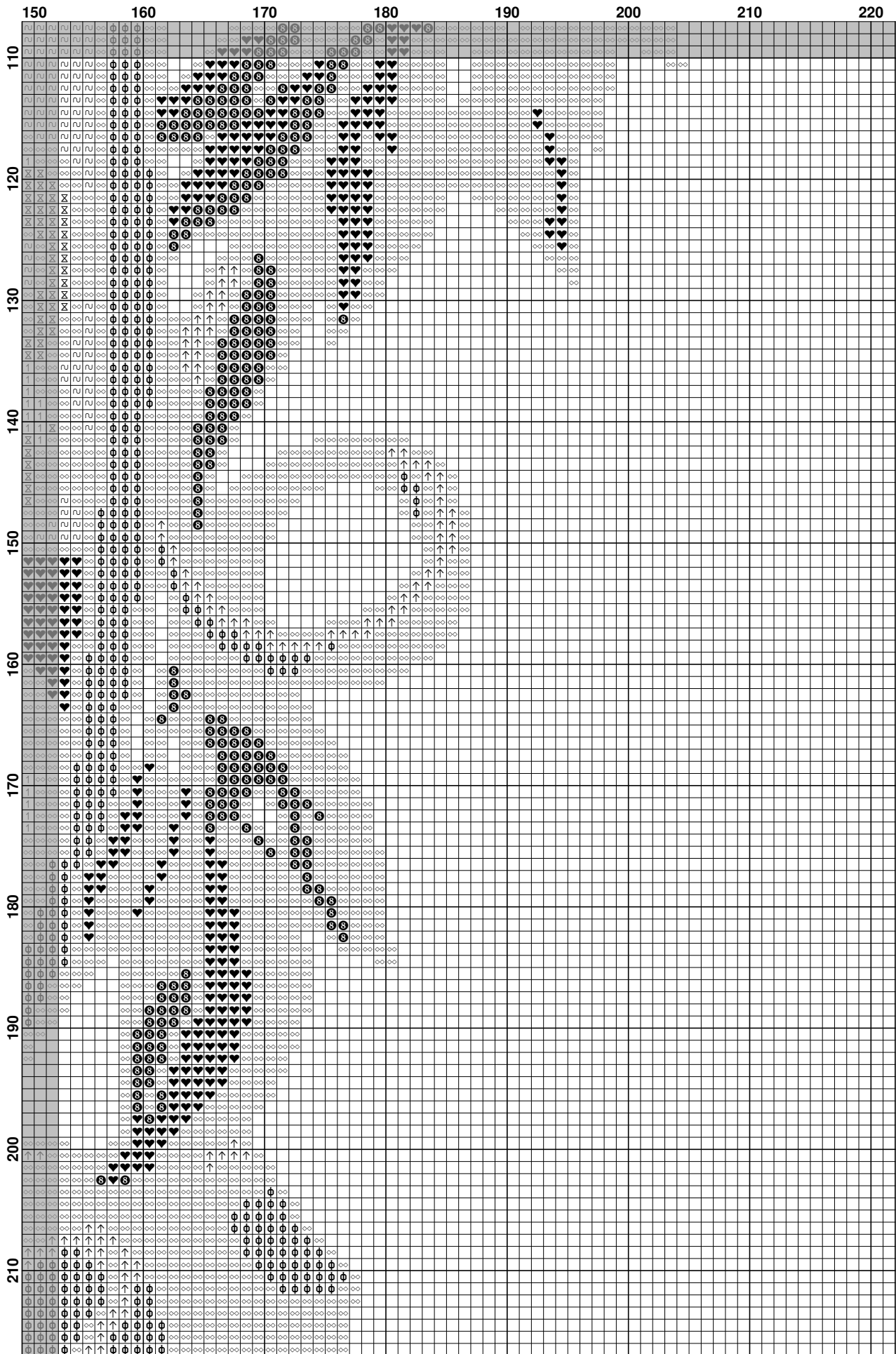
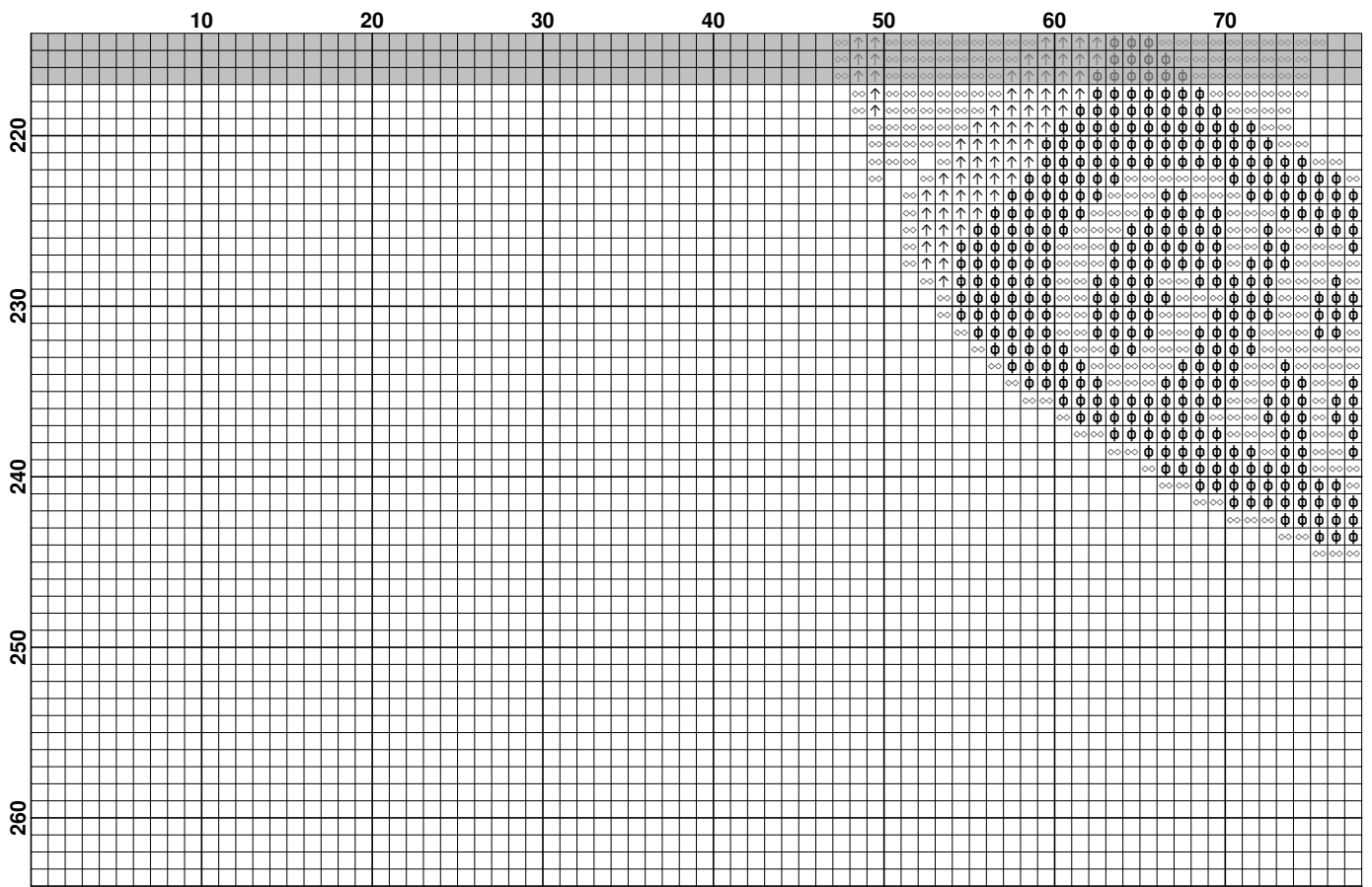


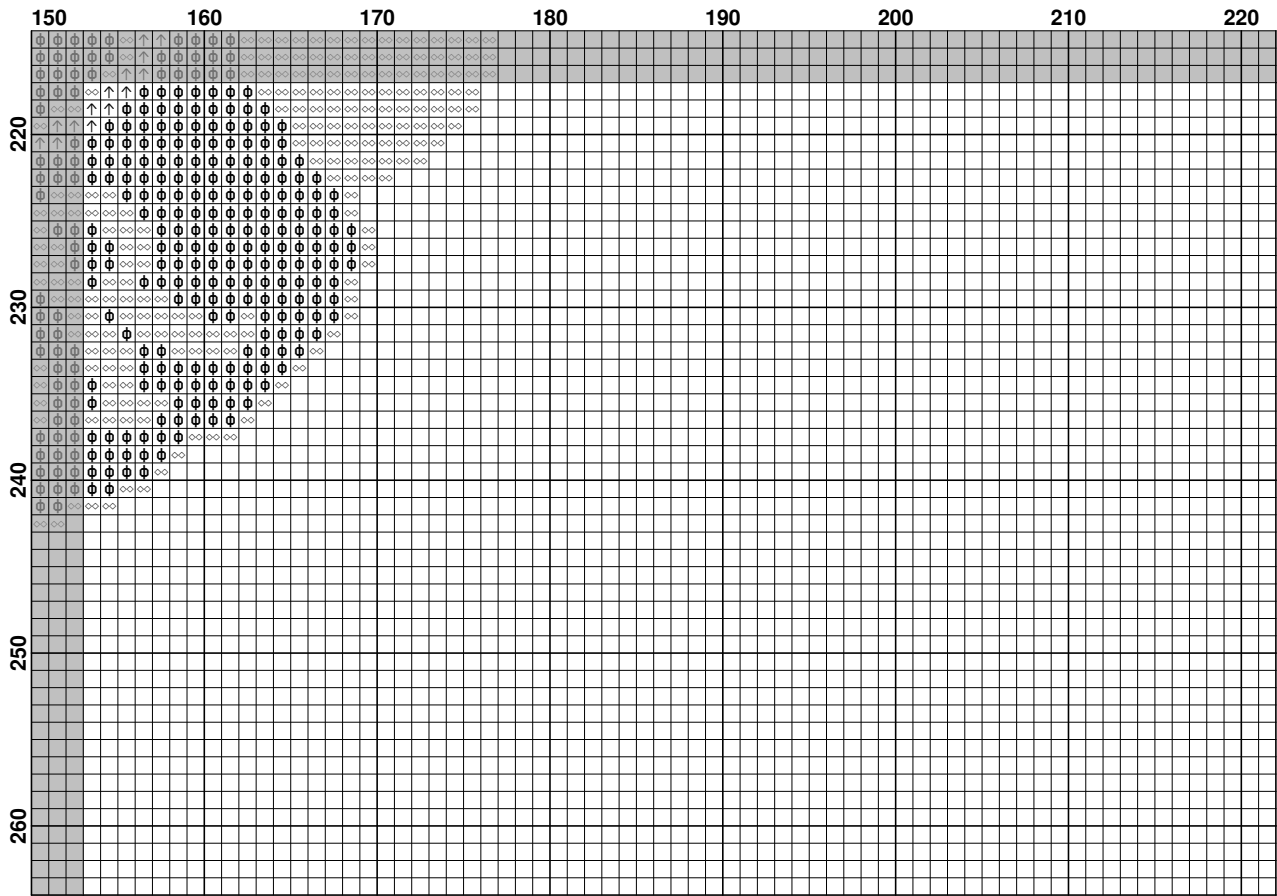
	80	90	100	110	120	130	140	150
110	1	1	1	1	1	1	1	1
120	1	1	1	1	1	1	1	1
130	1	1	1	1	1	1	1	1
140	1	1	1	1	1	1	1	1
150	1	1	1	1	1	1	1	1
160	1	1	1	1	1	1	1	1
170	1	1	1	1	1	1	1	1
180	1	1	1	1	1	1	1	1
190	1	1	1	1	1	1	1	1
200	1	1	1	1	1	1	1	1
210	1	1	1	1	1	1	1	1











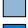
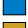








**Pattern Name:** Gryffindor3  
**Designed By:** Littlemojo  
**Fabric:** Aida 14, White  
 187w X 239h Stitches  
**Size(s):** 14 Count, 33.93w X 43.36h cm  
 16 Count, 29.69w X 37.94h cm  
 18 Count, 26.39w X 33.73h cm

**Floss Used for Full Stitches:**

Symbol	Strands	Type	Number	Color
	2	DMC	304	Christmas Red-MD
	2	DMC	310	Black
	2	DMC	415	Pearl Gray
	2	DMC	725	Topaz
	2	DMC	902	Garnet-VY DK
	2	DMC	951	Tawny-LT
	2	DMC	3755	Baby Blue
	2	DMC	3843	Electric Blue
	2	DMC	3852	Straw-VY DK
	2	DMC	3866	Mocha Brown-UL VY LT